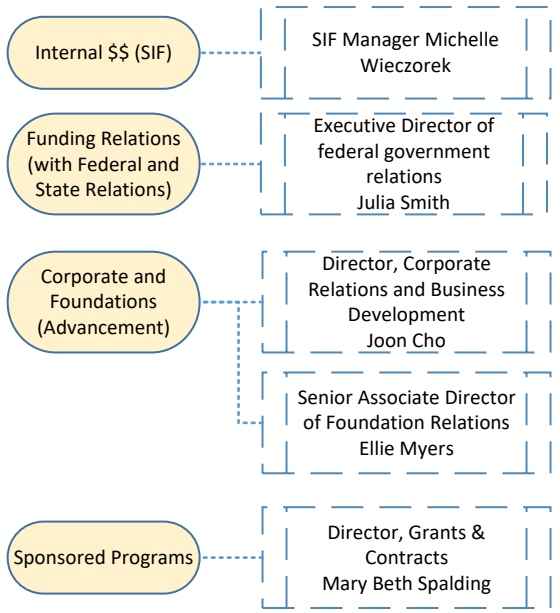
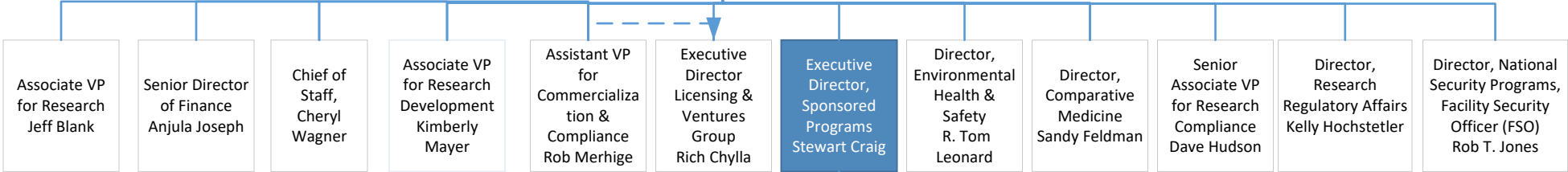


**Partners**

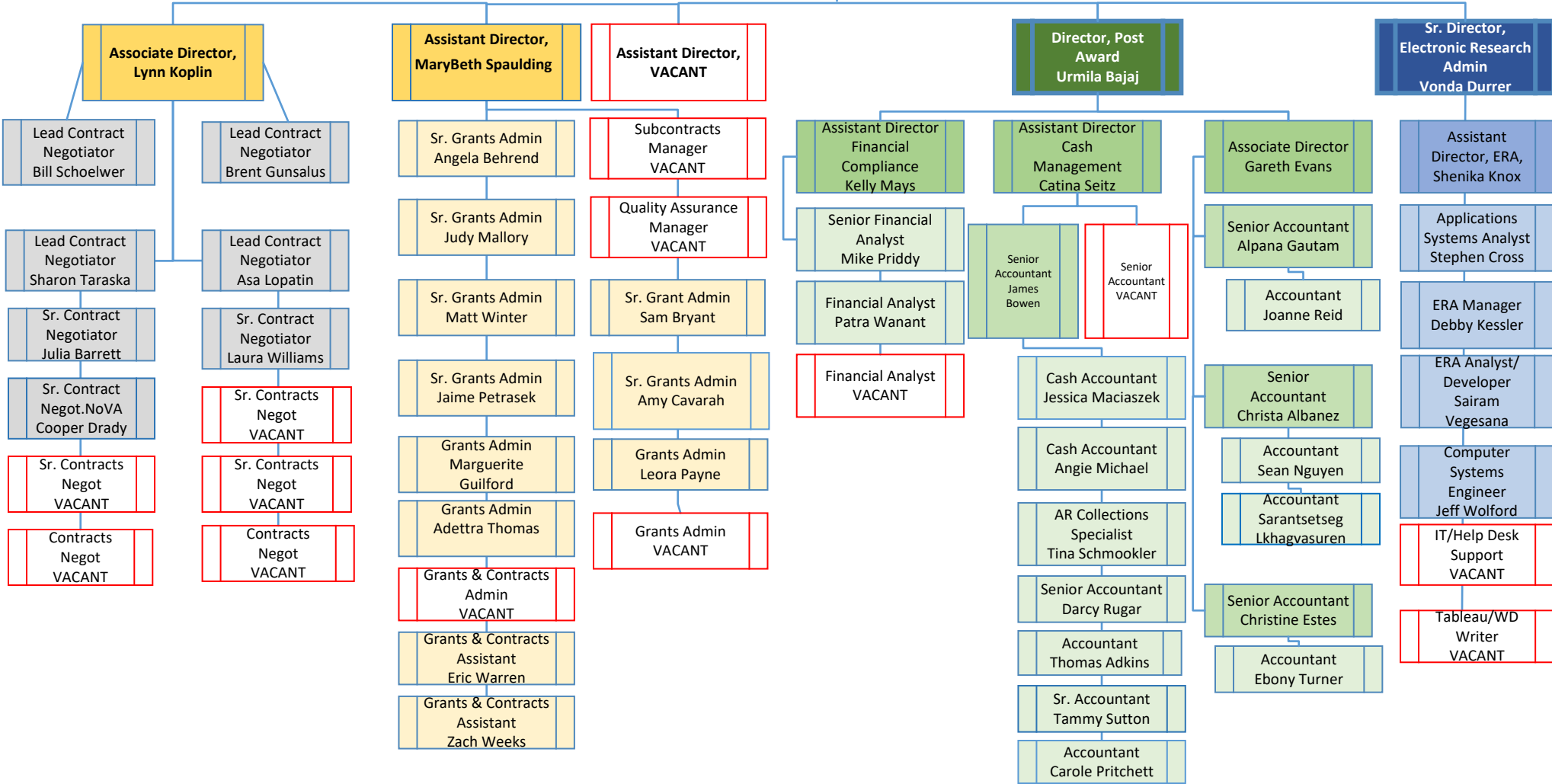


Vice President for Research  
Melur (Ram)  
Ramasubramanian

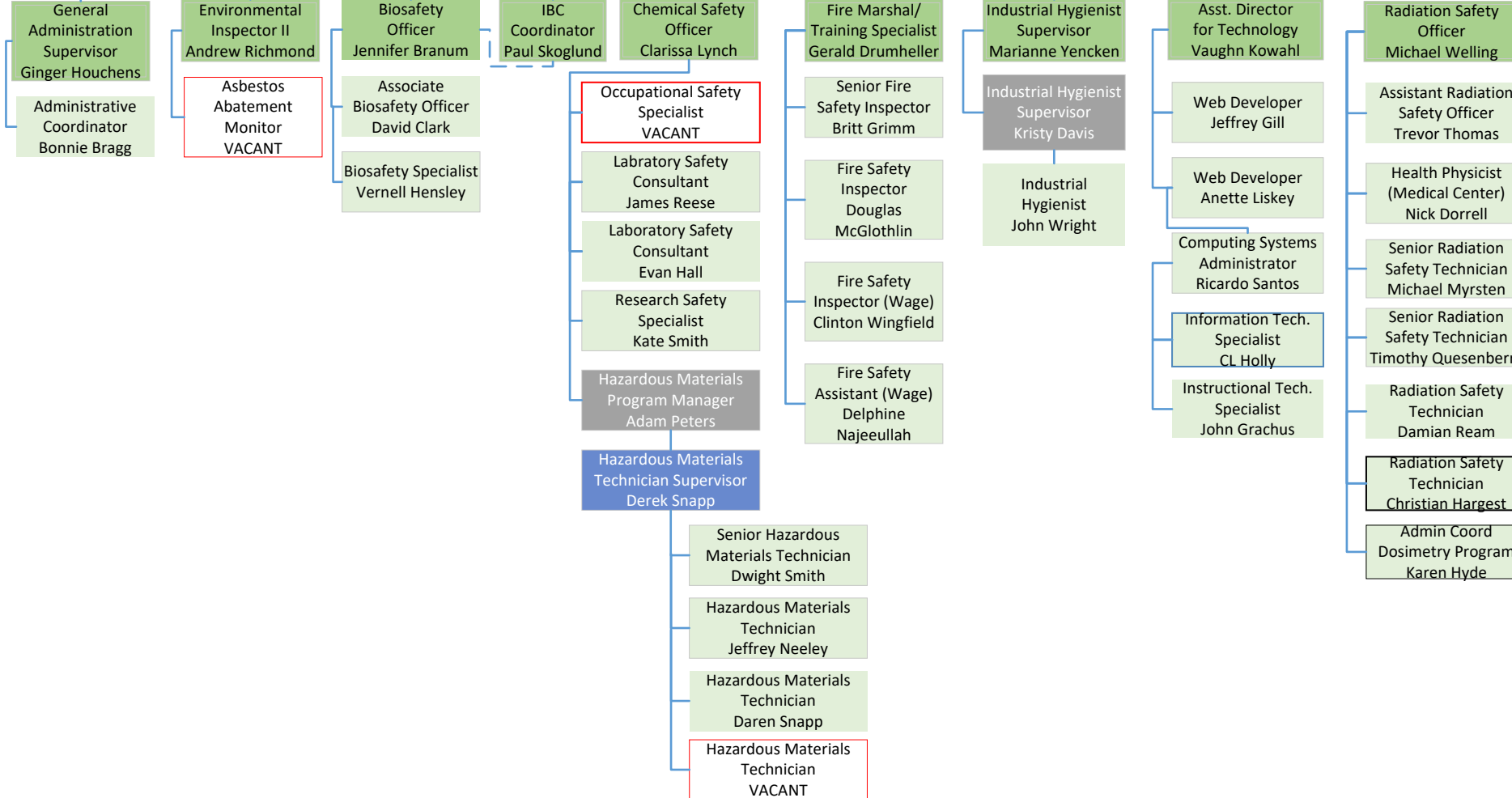
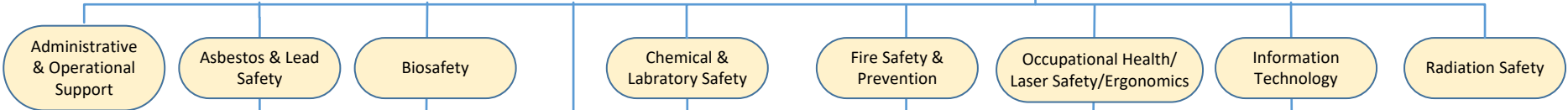
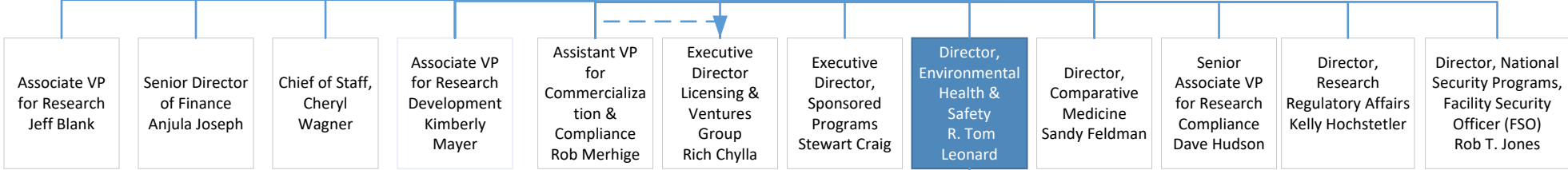


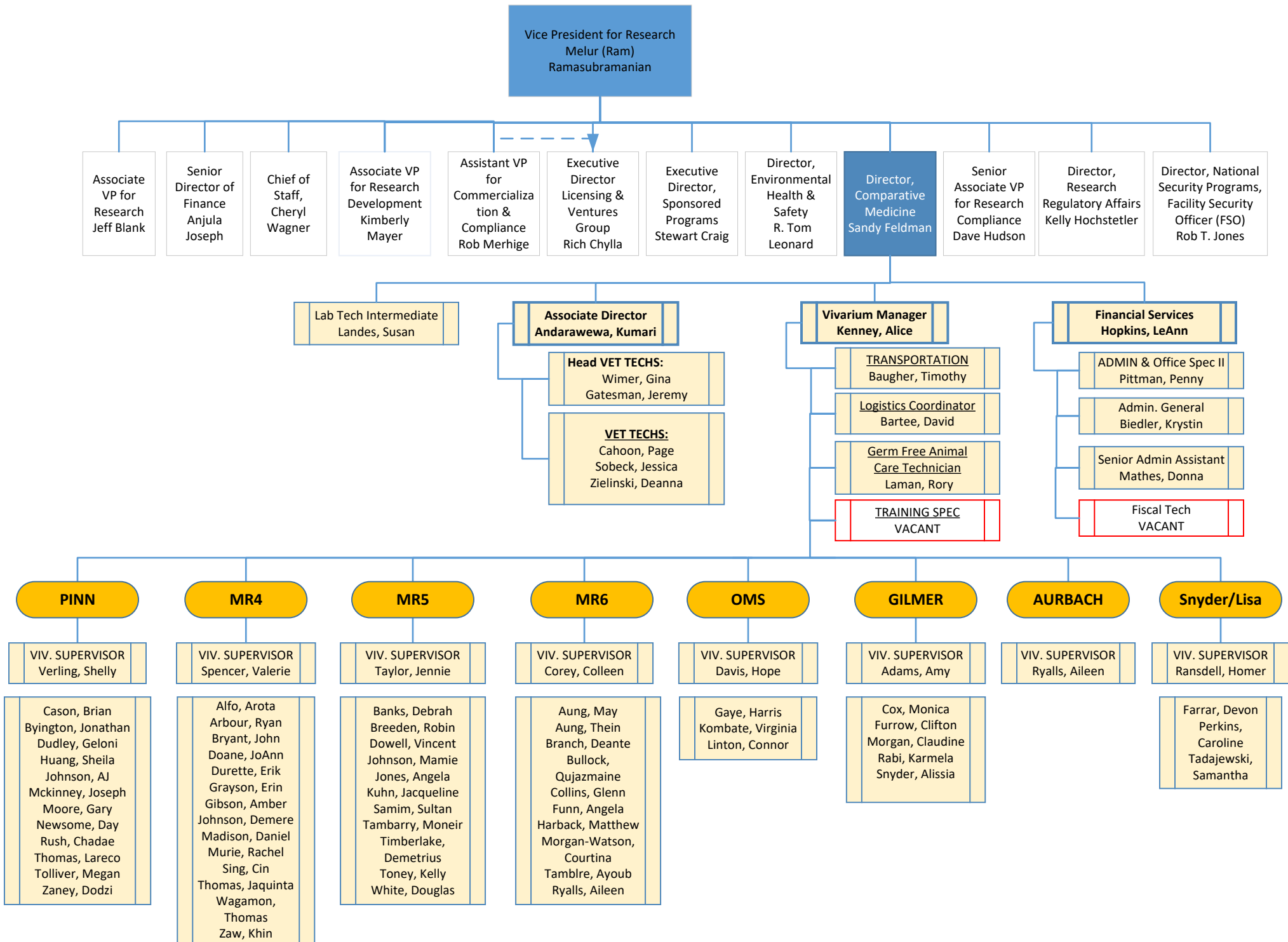
Business Operations & Training Manager-Rita Lam

Admin Assistant - VACANT

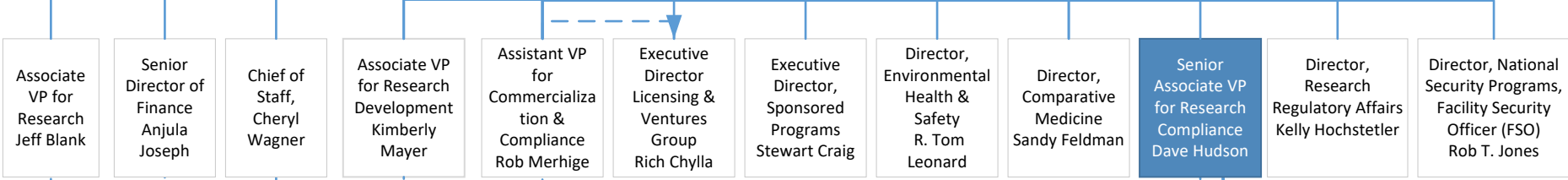


Vice President for Research  
Melur (Ram)  
Ramasubramanian





Vice President for Research  
Melur (Ram)  
Ramasubramanian



Executive Assistant  
Jessica Worsham

